



Richard King Mellon Foundation
2007 Annual Report

Richard
King
Mellon
Foundation

2007 Annual Report

One Mellon Center
500 Grant Street, Suite 4106
Pittsburgh, PA 15219-2502
412 392 2800 telephone
412 392 2837 fax
<http://foundationcenter.org/grantmaker/rkmellon/>

Richard King Mellon

1899–1970

Richard King Mellon was born in Pittsburgh, Pennsylvania, on June 19, 1899, the son of Richard Beatty Mellon and Jennie King Mellon. Mr. Mellon served his country in both World Wars and in peacetime, attaining the rank of Lieutenant General, United States Army Reserve, and receiving the Distinguished Service Medal. Mr. Mellon was the dominant figure in the financial, industrial, and civic life of his community for many years. He was President of Mellon National Bank and for twenty years Chairman of the Board of Mellon National Bank and Trust Company; as a director, he aided the growth of many of the nation's leading enterprises, particularly Gulf Oil Corporation and Aluminum Company of America.

Mr. Mellon, President and Governor of T. Mellon and Sons, inspired and led the rebirth of a great American city. His creative energies forged the Pittsburgh Renaissance, a nationally recognized architectural, civic, social, and educational venture.

In 1936, Mr. Mellon married the former Constance Mary Prosser, who served as Chairman of the Board of Trustees of the Richard King Mellon Foundation from its inception in 1947 until her death in 1980.

A renowned sportsman, Mr. Mellon generously endeavored to preserve the quality of the natural environment and to protect its wildlife.

Mr. Mellon died on June 3, 1970.



Contents

President's Letter	1
Selected Grant Portraits	6
Grant Summary	22
Regional Economic Development	23
Education	26
Human Services and Nonprofit Capacity Building	28
Children, Youth, and Young Adults	29
Conservation	31
Statements of Financial Position	32
Statements of Activities and Changes in Net Assets	32
Statements of Cash Flows	33
Summary of Investments	33
Notes to Financial Statements	34
Report of Independent Auditors	35
Policy and Grant Guidelines	36
Trustees, Officers, and Staff	inside back cover

(cover) Float Boat by Dale Chihuly, 2007
in the South Conservatory at
Phipps Conservatory and Botanical Gardens

Toward a Higher Quality of Living

In 2007, the Trustees of the Richard King Mellon Foundation approved new grants totaling \$128,506,570 and paid out \$109,215,672. These distributions reflect the Foundation's commitment to investing in strategies that will strengthen the economy in southwestern Pennsylvania, provide assistance to disadvantaged populations, retain and attract talented people, and preserve and restore our natural environment. Many of these grants also supported preparations for the Pittsburgh region's 250th anniversary in 2008.

The most significant amount of 2007 funding, \$56 million, was directed toward Pittsburgh's research economy. Almost \$30 million of Regional Economic Development and \$26 million of Education grants were made to medical and scientific endeavors at educational institutions, hospitals, and affiliated agencies. These grants are intended to strengthen Pittsburgh's position as a worldwide hub for research, clinical care, and biosciences entrepreneurship. They also will help facilitate the patenting, commercialization, and new company spin-outs that can result from research discoveries.

Regional Economic Development

The Foundation's grants for Regional Economic Development initiatives totaled a record \$49 million in 2007. The largest of these is a \$23-million contribution to support pediatric research in molecular and cellular biology at the University of Pittsburgh School of Medicine and Children's Hospital of Pittsburgh of UPMC. This grant will help establish the Richard King Mellon Foundation Institute for Pediatric Research in Children's Hospital's new 10-acre Lawrenceville campus.

The importance of the arts to tourism and community revitalization has prompted the Foundation to support collaborative programming and marketing efforts among 70-plus institutions under the themes of *Pittsburgh Roars* (2006) and *Pittsburgh Celebrates Glass!* (2007). In 2007, the Foundation provided a grant of \$600,000 to Event Committee Pittsburgh, Inc., the umbrella organization whose efforts triggered significant increases in earned revenues for major programs such as *Chihuly at Phipps: Gardens & Glass*.

Cultural tourism got a permanent boost with the October 2007 opening of Carnegie Museums of Pittsburgh Natural History Museum's *Dinosaurs in*



Chihuly at Phipps: Gardens & Glass

Their Time. In 2004, the Foundation contributed \$3 million toward a capital campaign that enabled the museum to expand its display of dinosaurs from 10 to 19, and to configure them with scientific and chronological accuracy.

While encouraging regional economic expansion, the Foundation also supports initiatives to reduce public sector overhead. For example, the Citizen's Advisory Committee on the Efficiency and Effectiveness of the City of Pittsburgh and Allegheny County Governments, chaired by Chancellor Mark Nordenberg of the University of Pittsburgh, received \$50,000.

Education

Similar to 1966, when Richard King and Constance Prosser Mellon helped establish Carnegie Mellon University's Computer Science Department, the Foundation made a \$25-million gift to this same university to establish a Life Sciences Competitiveness Fund. This fund will help advance discoveries in interdisciplinary fields such as computational biology, medical robotics, and biomedical engineering.

The Foundation provided \$5 million in additional Education support for long-range planning, capital improvements, and operations to colleges and universities and to independent and parochial schools. Two private schools that received support are The Neighborhood Academy, \$250,000, and Sewickley Academy, \$750,000.



Sewickley Academy

Human Services and Nonprofit Capacity Building

Grants totaling \$8.2 million were made to agencies and programs that provide food, shelter, and medicine as well as job skill training to the Pittsburgh



*Pleasant Valley Shelter,
Northside Common Ministries*

region's underserved and disadvantaged populations. In addition, the Foundation made grants for initiatives intended to improve the delivery and stability of human services programs such as \$200,000 to assist Northside Common Ministries, following its merger with Goodwill Industries of Pittsburgh.

Children, Youth, and Young Adults

The well-being of children has been a concern of the Foundation since its inception, a heritage of Constance Prosser Mellon, chair from 1947 until her death in 1980. Among the \$10 million in grants made, several target neighborhood-based early-childhood and after-school programs that address the physical and emotional welfare of children and organizations that offer recreation, guidance, mentoring, and the development of leadership skills. A contribution of \$150,000 was made to East End Cooperative Ministry, Inc. toward support of an intervention program for children in high-risk living environments.



*Reverend Darnell
Leonard of East End
Cooperative Ministry,
Inc. with students from
the PHYSED program*

Conservation

As the Trustees consider the greatest challenges facing the future, the quality of water and the threat of urban expansion to wildlife and its habitat reinforce the importance of continuing a deliberate and strong emphasis in conservation. Grants totaling \$31 million were made to protect western Pennsylvania's watersheds

and forests and one of America's most significant ecosystems.

The Foundation made gifts of almost \$15 million to the Western Pennsylvania Conservancy for land, timber rights, and easements in seven counties. Several of these parcels will serve as model sites for mine drainage

*Carnegie Museums of Pittsburgh Natural
History Museum, Jurassic Atrium of
Dinosaurs in Their Time*

cleanup and/or watershed improvement and sustainable forestry programs.

Through an initial grant to The Conservation Fund of \$5 million, the Foundation has joined with The Nature Conservancy, the United States Fish and Wildlife Service, and the State of Montana, among others, in a longer-term strategy that will protect 220,000 acres of the Rocky Mountain Front.

To showcase western Pennsylvania as a destination for recreational tourism and recognize Pittsburgh's 250th birthday, the Foundation contributed \$1.5 million toward completion of the last nine miles of the Great Allegheny Passage, a walking and biking trail that runs from Washington, D.C. to Pittsburgh, and \$750,000 toward the renovation of Point State Park.

Transitions

In 2007, the Richard King Mellon Foundation marked its sixtieth anniversary. The Trustees are gratified that since 1947 the Foundation has been able to award grants totaling more than \$1.5 billion to improve the quality of life in southwestern Pennsylvania and to protect the environment in Pennsylvania as well as across the United States. One of the enduring satisfactions of these efforts is the opportunity to work with so many talented people and impressive organizations that help strengthen the region's intellectual and industrial capital, families and communities, and natural resources.



Seward Prosser Mellon
President

Laurel Hill Creek Forest in Somerset County, a property acquired in 2007 by the Western Pennsylvania Conservancy



Regional Economic Development

In a move that heralds a brighter future for children, **Children's Hospital of Pittsburgh of UPMC** will relocate in 2009 from its aging Oakland facility to a new 10-acre integrated hospital and research campus in Lawrenceville, designed to achieve healthier outcomes for patients. Its faculty and programs are part of the **University of Pittsburgh School of Medicine**. More than 400 physicians, including pediatric residents and subspecialty fellows, will staff the 296-bed hospital while the adjoining 300,000-square-foot research facility will accommodate up to 70 principal investigators and their teams. Here, the Richard King Mellon Foundation Institute for Pediatric Research will house and support a newly recruited, internationally recognized scientist and five accomplished scholars working in cellular and molecular biology. Among other possibilities, their research has the potential to lead to new strategies for the prevention of brain and lung damage caused by low oxygen in premature babies and better treatment methods for bacterial pneumonia, one of leading causes of mortality in children.

"The Richard King Mellon Foundation Institute will be an incubator for research that challenges conventional wisdom and leads to paradigm shifts in pediatric medicine," says Dr. David Perlmutter, Physician-in-Chief and Scientific Director at Children's and Chair of the Department of Pediatrics at the University of Pittsburgh School of Medicine. "It will help further elevate Pittsburgh's position as one of the world's leading centers for pioneering research."



Dr. David Perlmutter visits the sixth floor of the new Children's Hospital research center during construction. The new facility will have double the amount of lab space of the existing Oakland facility and will support biomedical research including genomics, cellular imaging, signal transduction, structural biology, immunology, and neuroscience, among other fields.

The Research Economy

Patient and mother with Dr. Benjamin Shneider, the Director of the Pediatric Hepatology Program at Children's Hospital of Pittsburgh of UPMC and principal investigator for three National Institutes of Health grants



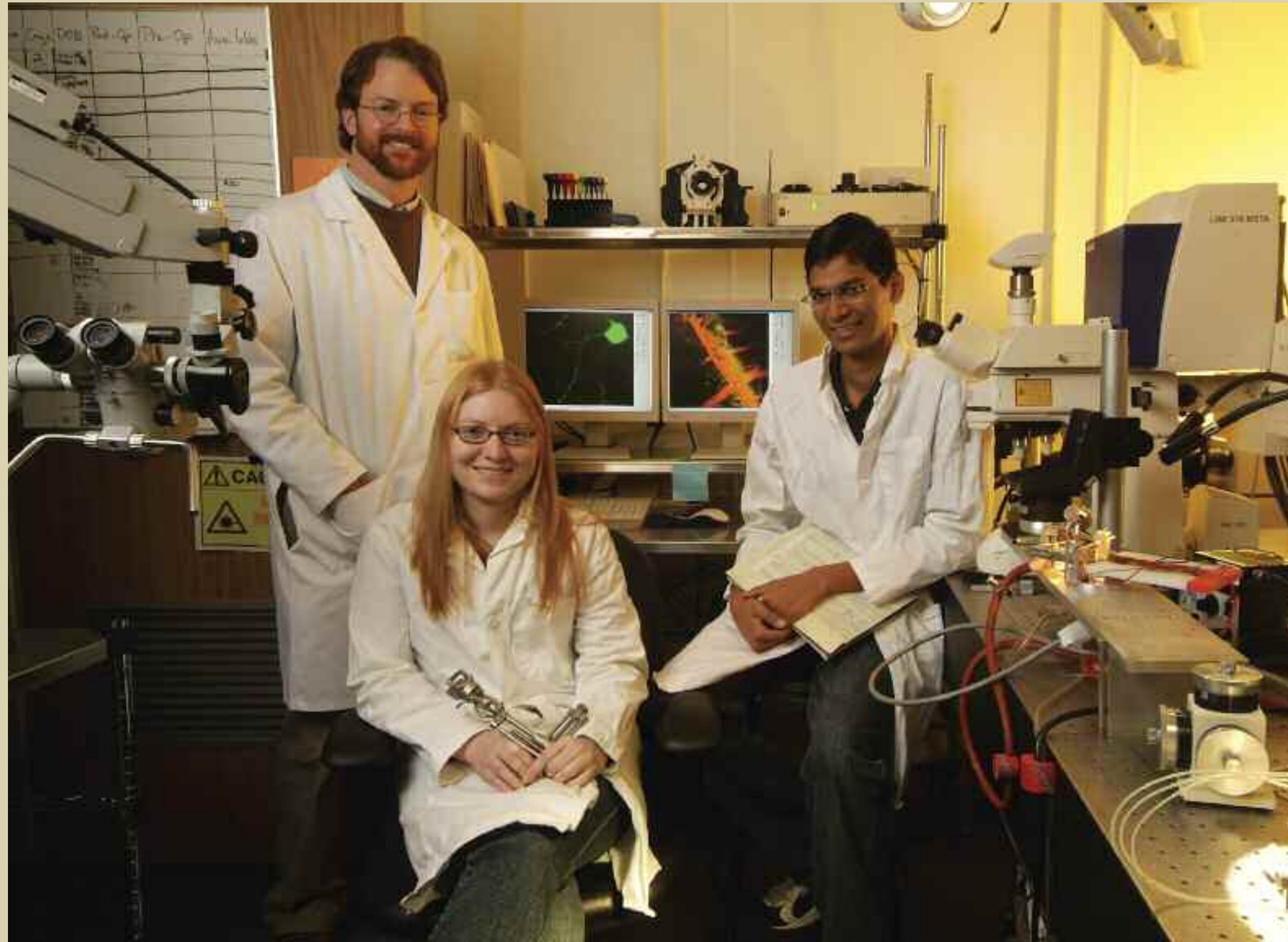
The façade of the new Children's Hospital of Pittsburgh of UPMC in Lawrenceville



Education

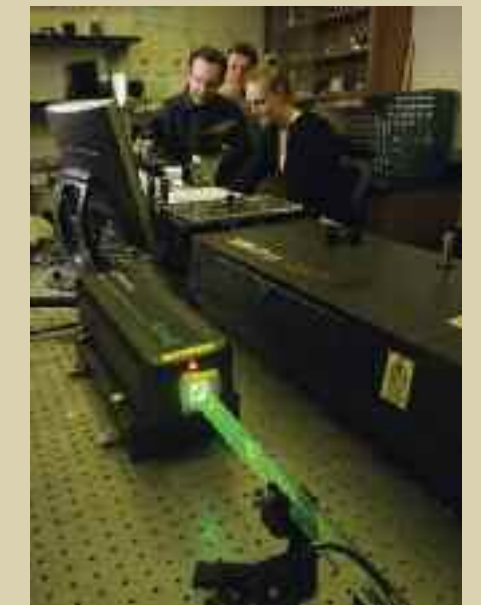
For the last several years, mathematical, medical, and other scientific research at **Carnegie Mellon University** and the **University of Pittsburgh** has been capturing a greater share of highly competitive federal research dollars from sources such as the National Science Foundation and the National Institutes of Health. Since 2000, research funding at the University of Pittsburgh and Carnegie Mellon University has almost doubled, increasing from \$500 million in 2000 to more than \$900 million in 2007. The universities also have significantly improved their output of research-derived patents and start-up companies. This has attracted a larger market share of venture capital and resulted in the creation of thousands of jobs at companies such as Akustica, ALung Technologies, BodyMedia, Inc., Cellumen, Inc., and Plextronics, Inc.

The Richard King Mellon Foundation is helping to support the continuation of this momentum by establishing the Life Sciences Competitiveness Fund and the Presidential Scholars Fund to attract the best and the brightest graduate students at Carnegie Mellon University. Carnegie Mellon is leveraging its distinctive strengths in computer science and engineering to create new opportunities and discoveries in such emerging life sciences fields as computational biology, medical robotics, and biomedical engineering. Among other research, the funds will be used to advance the collaborative efforts of biochemists and computer scientists whose molecular-theoretical and computational calculations could eventually help develop drug therapies to treat a variety of disorders including epilepsy and Alzheimer's disease. The funding also will help expand the University of Pittsburgh's and Carnegie Mellon's Quality of Life Technology Engineering Research Center, which is developing intelligent systems to help people with physical and cognitive impairments live more independently.



Justin Crowley, Ph.D., works with graduate students Nicole Marthaler and Saksham Chandra in Carnegie Mellon University's Neuroscience Lab. Here, the work focuses on understanding what cues direct neurons to form functional brain circuitry during the development of the visual system and throughout development in general.

(below) James Fitzpatrick, Ph.D., and Dara Brown and John Holleran, Ph.D. candidates at Carnegie Mellon University, work with a multi-photon confocal microscope.



(right) Yehuda Creeger works with Ph.D. candidate Rowena Mittal in the Flow Cytometry Lab at Carnegie Mellon University. Here, scientists are combining flow cytometry, a technique for counting, examining, and sorting molecules, with genetic engineering technologies to identify new molecular probes that are highly specific for a given cell target.



Regional Economic Development

With dynamic museums and performing arts organizations, Pittsburgh is frequently benchmarked as one of America's most livable metropolitan areas. Now tourists too are discovering that the region's artistic and historical heritage is a compelling magnet. Pittsburgh's recent ranking as one of the top arts destinations for mid-size cities (*American Style* magazine) is due in part to an initiative begun in 2005. Arts, business, and community groups partnered with tourism and government agencies to coordinate the programs and marketing of the region's cultural assets. Organizations such as the **Carnegie Museums of Pittsburgh**, the **Frick Art & Historical Center**, **The Pittsburgh Ballet Theatre, Inc.**, **The Pittsburgh Cultural Trust**, the **Pittsburgh Public Theater**, the **Pittsburgh Symphony Orchestra**, and the **Westmoreland Museum of American Art** began working collaboratively to help the region shine. Under the umbrella **Event Committee Pittsburgh, Inc.**, this consortium has grown to 70-plus organizations. *Pittsburgh Celebrates Glass!* was the major theme for 2007, with an array of exhibitions anchored by glass artist Dale Chihuly at Phipps Conservatory. The Chihuly exhibition alone attracted almost 400,000 people (more than double the Phipps attendance from the previous year), with 32 percent of these visitors coming from outside the region, and it generated more than \$20 million for the local economy in hotel revenues, shopping, and tax revenues.

The partners continue to build on this success, focusing on a set of major initiatives and programs to promote the region during its 250th anniversary in 2008. They are off to a great start as Frommer's, the travel guide publisher, in December 2007 named Pittsburgh one of 13 world places worthy of visiting in 2008: "Steel City USA has swapped out its rusting blast furnaces for a modern cityscape with a thriving local and international arts scene."



Persian Chandelier by Dale Chihuly, 2007 in the Victoria Room at Phipps Conservatory and Botanical Gardens during Chihuly at Phipps: Gardens & Glass



Cultural Tourism

Pittsburgh Festival of Lights, a component of Pittsburgh Celebrates Glass!, involved the lighting of several Downtown Pittsburgh buildings in the summer of 2007. Each design was inspired by a different style of glass and created by French lighting designer, Lucette de Ruy of Artlumière, Inc. Shown at right is the Omni William Penn Hotel with and without the lighting effect.



Education

A region's ability to provide options among public, parochial, and private schools not only gives families the opportunity to select education programs that work best for their children, but also contributes to the retention and infusion of new business in the region. Choice among public and private schools creates a healthy competition, which can help improve overall education performance and promote a quality workforce.

Two independent schools in the Pittsburgh region that set a standard for excellence in education are **The Neighborhood Academy** in Lawrenceville and **Sewickley Academy** in Edgeworth Borough. Both schools have very low student-teacher ratios and rigorous and individualized curriculums. Both stress character development and values formation. Each is fully accredited by the Pennsylvania Association of Independent Schools and achieves 100 percent college acceptance rates. Also significant is that both are working to reduce the gap in academic achievement between advantaged and disadvantaged youth.

Founded in 2001, The Neighborhood Academy serves eighth- through twelfth-grade students exclusively from low-income families who otherwise would not have the chance to attend college. The Academy offers a weekday program starting with chapel at 7:30 a.m. followed by breakfast and ending with dinner at 7:30 p.m. The before- and after-school activities are geared toward building self-esteem, knowledge of the options that lie ahead, and community responsibility.

Founded in 1838, Sewickley Academy serves prekindergarten through twelfth-grade students and offers extensive programs in theater, music, and the arts. More than 120 of its 780 students receive scholarships. Sewickley Academy attracts students from 52 school districts from the surrounding area including Ohio and West Virginia, and has 37 National Merit Scholars.



Independent Schools

Ms. Jayne Parker's third-grade class at Sewickley Academy



Students from The Neighborhood Academy studying for exams and participating in a field trip to the Carnegie Museum of Art.

Human Services and Nonprofit Capacity Building

One of the many organizations addressing hunger and the needs of Allegheny County's estimated 2,000 homeless population is **Northside Common Ministries**. Northside Common Ministries was established in 1982 by a coalition of 30 independent churches. For the past 25 years, a small paid staff and extensive volunteer corps have operated the Community Food Pantry, which provides free groceries to economically distressed individuals and family households each month. Every night this organization opens its doors to house, clothe, and feed upwards of 25 homeless men at its Pleasant Valley Shelter. Shelter clients also are given access to a medical clinic, spiritual counseling, and substance abuse and mental health programs.

Although the Ministries has long hoped to build a program to move its clients toward independent living, growing costs made sustaining even its basic services a challenge.

The solution was an alliance with the much larger **Goodwill Industries of Pittsburgh**. Goodwill provides human resource and fund-raising capacity to help maintain and grow the Ministries' core programs, and through Goodwill's wide-ranging job training, the Ministries can more effectively help its clients tackle the barriers to living independently.

Michael A. Glass, Executive Director of Northside Common Ministries, says, "The affiliation with Goodwill opens up tremendous potential for us to serve our clients more effectively and efficiently. Goodwill's extensive employment training network will enable people to get into the workforce in a variety of areas that meet their own capacities. At the same time Northside Common Ministries can focus on its neighborhood-based mission."



Neighborhood-Based Assistance

Visitors to the Northside Common Ministries Community Food Pantry

Michael A. Glass, Executive Director of Northside Common Ministries, with volunteers in the Community Food Pantry

(right) Sto-Rox elementary students participate in a Sto-Rox Focus on Renewal after-school education program. Events such as this will take place in a new community-based performing arts facility that is currently being developed for the residents of the Borough of McKees Rocks, and the Township of Stowe, Pennsylvania.

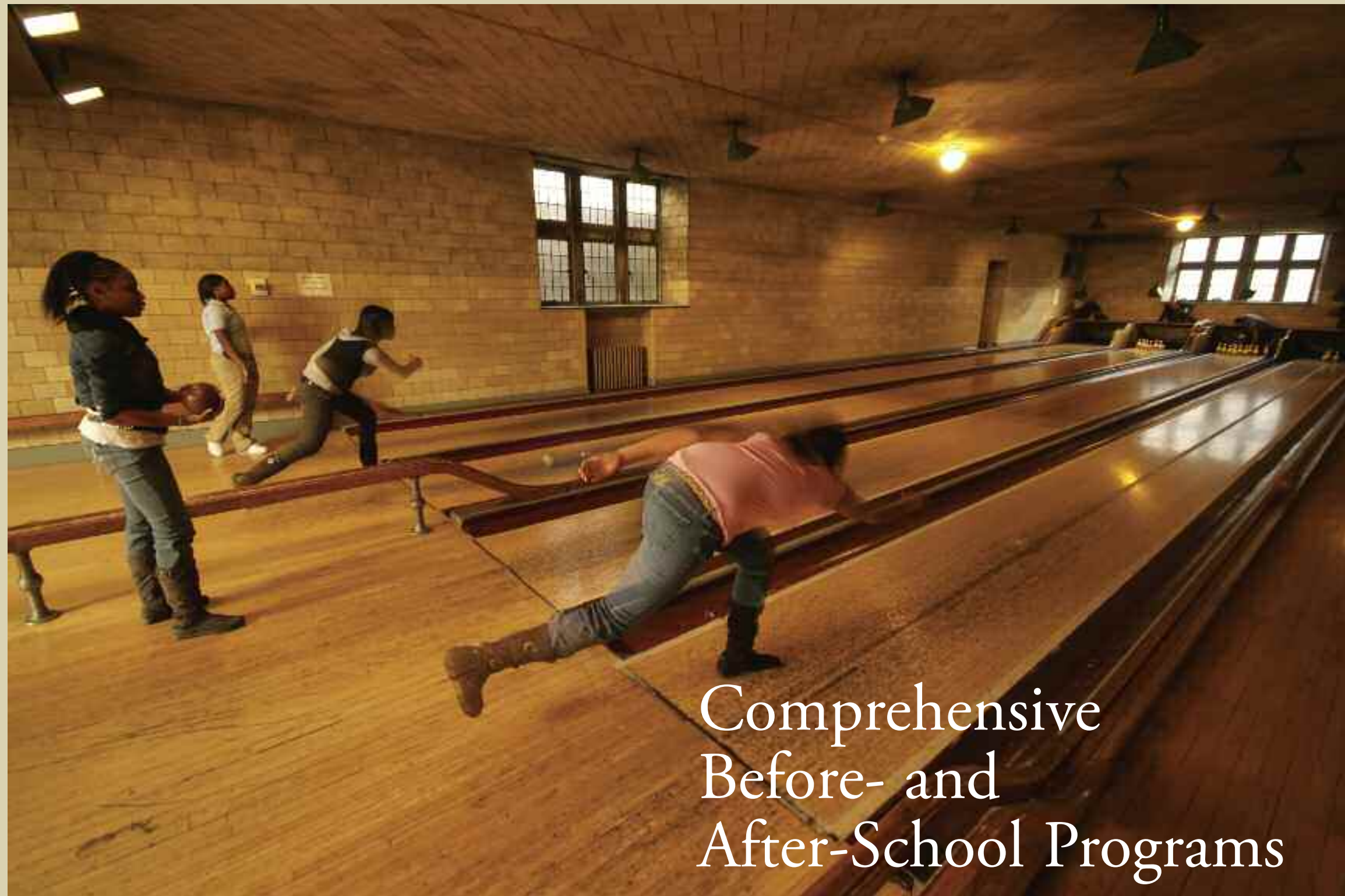


Children, Youth, and Young Adults

“The kids that come here have experienced more than their fair share of rejection, disappointment and loss. We try to help them work through their feelings, learn to respect themselves, and develop skills to negotiate the risks in their surroundings so they are not looking in the wrong places for validation,” says Reverend Darnell Leonard.

At **East End Cooperative Ministry, Inc.**, Reverend Leonard directs **PHYSED**, Points of Healthy Youth Sustainability and Development. Approximately 175 seventh- through ninth-grade students from four Pittsburgh public schools, Arsenal Middle, Faison Intermediate, and Peabody and Westinghouse High Schools, take part in PHYSED activities. All of the children in the program are living under highly disadvantaged circumstances.

PHYSED’s overarching objectives are to help these adolescents improve their potential to have healthy and successful adult lives. The program offers rewarding, challenging, and age-appropriate activities in a safe, structured, nurturing environment. PHYSED provides academic assistance and counseling, one on one and in groups. There is a special emphasis on addressing the challenges of growing up in neighborhoods where violence is prevalent and coping with situations that may lead to other risky and harmful behavior. The program counselors work with the children to help them try to avoid these encounters in the future. Children learn to replace negative attitudes and behaviors with positive ones, including goal setting, skill building, and planning for their adult lives. They engage in community service activities, physical exercise, and competitive sports, all designed to build self-esteem, character, and resilience.



East End Cooperative Ministry, Inc. PHYSED participants engage in a game of duckpin bowling in the lower level of the East Liberty Presbyterian Church

(right) Children from Manchester Youth Development Center, Inc. (MYDC) participate in a robotics competition. MYDC works to assist parents and caregivers with the total development of their children by providing a comprehensive youth development program, offering preschool, and after-school and summer programs for 185 children in kindergarten through twelfth grade.



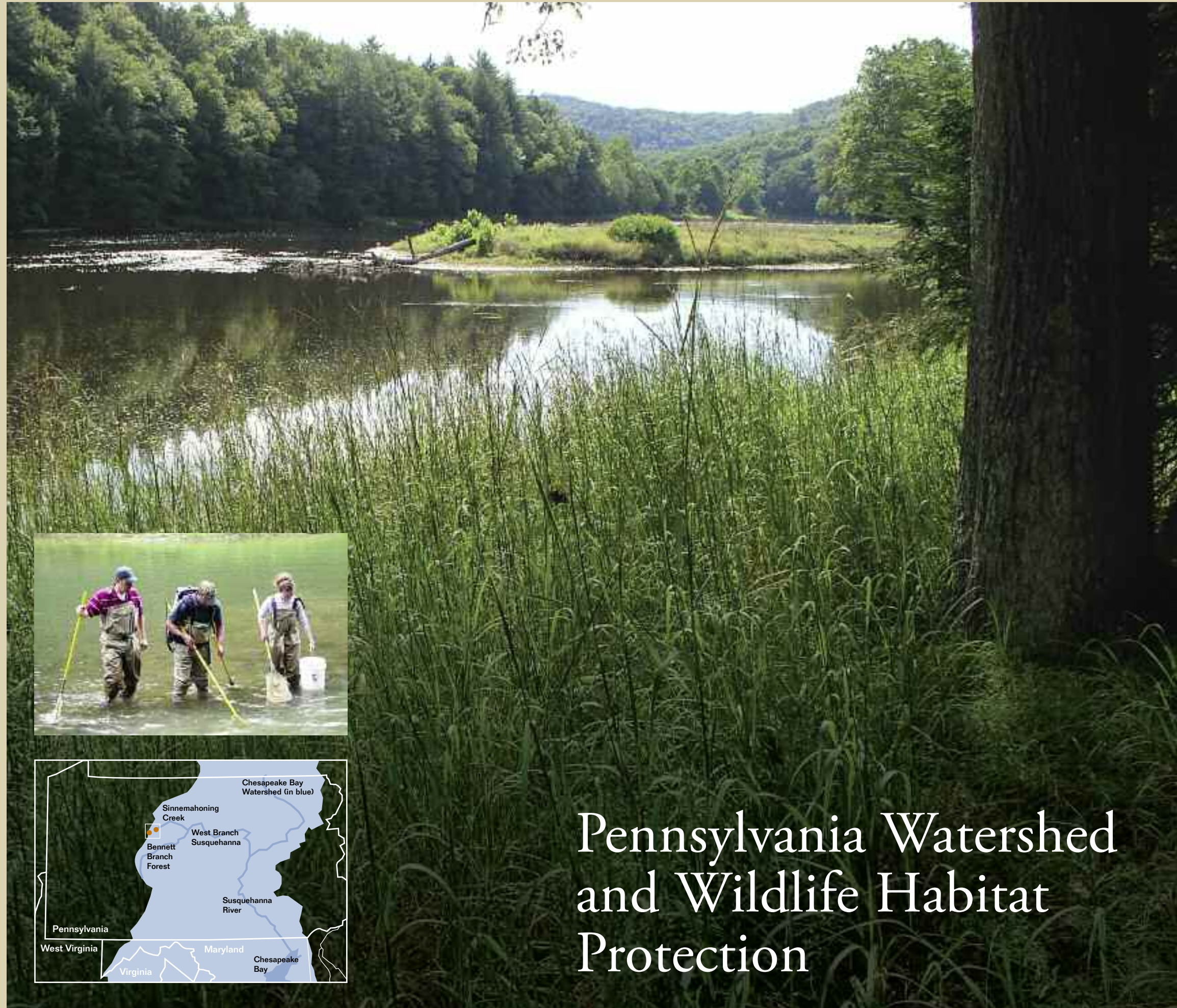
Conservation

In 1681, a cash-strapped William Penn called in a debt owed to his father by England's Charles II. The King responded by issuing Penn a charter for property in the New World, which the King entitled Pennsylvania or Penn's Woods. More than 90 percent of the 29 million acres was covered with forests. Today, while Pennsylvania's forests and waterways are still priceless resources, they have been challenged by resource extraction and growth.

For 75 years, the **Western Pennsylvania Conservancy** has been at the forefront of efforts to reverse these modern-day impacts. In 2007, the Conservancy sought grants from the Richard King Mellon Foundation of nearly \$15 million, which enabled it to protect land and resources in seven Pennsylvania counties. In Clearfield and Elk Counties, the Bennett Branch Forest, a watershed that ultimately drains into the Chesapeake Bay, is being protected in partnership with the Commonwealth of Pennsylvania. The streams in the Bennett Branch Forest form a tributary of the Sinnemahoning Creek, which has been affected by acid mine drainage.

Over time, most of this wooded acreage will be deeded to the Pennsylvania Department of Conservation and Natural Resources for recreational use and to serve as a model for sustainable forestry. The Pennsylvania Department of Environmental Protection will implement an acid mine drainage treatment program for the Sinnemahoning.

Since 1932, the Conservancy has protected through purchase and/or conservation easements more than 225,000 acres in Pennsylvania. The Foundation has been a long-term supporter of this endeavor, providing grants that have in whole or in part protected and preserved nearly 45,000 of this acreage.



The Western Pennsylvania Conservancy acquired land in the Southern Clarion River Forest, south of Cooksburg, Pennsylvania, in 2007, and this is now available for a variety of recreational uses.

The Audubon Society of Western Pennsylvania and the Western Pennsylvania Conservancy work in collaboration on watershed education and protection. Here, three students from the Conservancy's Freshwater Conservation Program participate in a watershed training session.

More than 150 rivers and streams drain into the Chesapeake Bay watershed, which covers 60,000-square miles in parts of six states and the District of Columbia.

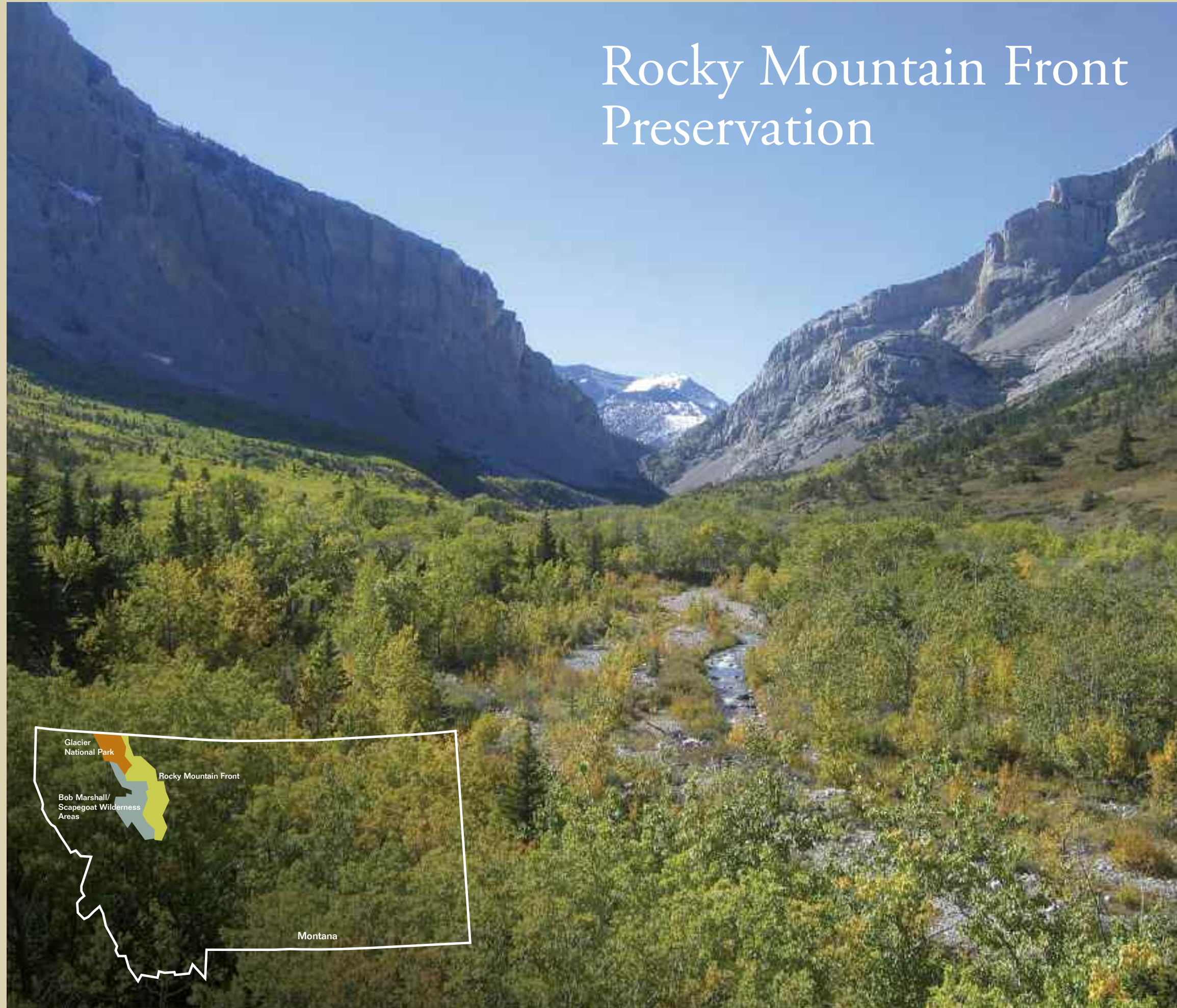
Pennsylvania Watershed and Wildlife Habitat Protection

Conservation

In Montana, the eastern face of the Rocky Mountains abruptly uplifts from the Northern Great Plains, creating the **Rocky Mountain Front**—a breathtaking and biologically unique landscape. Located adjacent to the Bob Marshall Wilderness Area and Glacier National Park, the Rocky Mountain Front is considered to be one of America's most important wildlife habitats. It is home to one of the only healthy grizzly bear populations in the lower 48 states, one of the largest populations of bighorn sheep, 21 species of raptors including nine species of owls, and one of the nation's greatest populations of golden eagles and prairie falcons.

In the past, thousands of elk and mule deer have coexisted and traveled freely among traditional ranches ranging in size from 2,000 acres to 25,000 acres. Now, however, this habitat is threatened by development. More than 3 million acres of Montana's wild habitat have been lost to vacation homes and recreational development in the past 15 years.

In order to help protect 220,000 acres of the Rocky Mountain Front in Montana, the Richard King Mellon Foundation has made an initial grant of \$5 million as part of a longer-term commitment to **The Conservation Fund**, which is working with a public-private effort to safeguard the land through easements and purchases. Over the next five years, the partners, including individuals, other foundations, the United States Fish and Wildlife Service, The Nature Conservancy, and the State of Montana, will work to raise the capital required to preserve the uninhibited seasonal migrations of fauna between the mountains and the wetlands and grasses for generations to come.



Rocky Mountain Front Preservation

The Rocky Mountain Front is an area extending over 100 miles from the central region of Montana to southern Alberta, Canada. Many of the original animal species and plants encountered when the Lewis and Clark expedition passed through the region still exist in their native state.

2007 Appropriations

By Category

Conservation	\$30,829,120
Regional Economic Development	49,375,200
Children, Youth, and Young Adults	10,016,000
Education	30,083,500
Human Services and Nonprofit Capacity Building	8,202,750
	<hr/>
	\$128,506,570

By Area

Pittsburgh and Southwestern Pennsylvania	\$114,652,070
Other	13,854,500
	<hr/>
	\$128,506,570

1947-2007 Net Investment Income

1947-2006	\$986,804,469
2007	94,233,626
	<hr/>
	\$1,081,038,095

1947-2007 Grants Paid and Program-Related Investments

1947-2006	\$1,458,372,758
2007	109,215,672
	<hr/>
	\$1,567,588,430



Allegheny County Cooperative Extension's Grow Pittsburgh, an urban farming initiative in Braddock, Pennsylvania

The following sections provide brief reports on the Richard King Mellon Foundation's grant activities in 2007.

Regional Economic Development

3 Rivers Connect

Pittsburgh, PA

\$650,000 toward the continuing development and deployment of the Information Commons in southwestern Pennsylvania

3 Rivers Wet Weather, Inc.

Pittsburgh, PA

\$500,000 for consolidating sewage infrastructure management

Allegheny Conference on Community Development

Pittsburgh, PA

\$390,000 toward support of the Conference's 3 Rivers: One Future Campaign for 2007

\$50,000 toward development of a comprehensive energy policy for the Commonwealth of Pennsylvania

\$50,000 toward support of iPort, a program designed to attract businesses from India to Pittsburgh

Allegheny County Cooperative Extension

Pittsburgh, PA

\$75,000 for support of Grow Pittsburgh, an initiative creating a community garden in Braddock

Allegheny General Hospital

Pittsburgh, PA

\$500,000 to restore the facade of the Auberlie building to its original and historical beauty

Asian American Film Festival of Pittsburgh

Pittsburgh, PA

\$50,000 for the 2007 Silk Screen: Asian American Film and Music Festival

Attack Theatre, Inc.

Pittsburgh, PA

\$55,000 toward one-year support for building capacity for shared programming initiatives

Bike Pittsburgh, Inc.

Pittsburgh, PA

\$36,000 to assist the City of Pittsburgh in striping bike lanes and installing signage

Blueroot Technologies, Inc.

McKeesport, PA

\$100,000 toward costs associated with the Quality of Life Technology Campus

Carnegie Institute

Pittsburgh, PA

\$57,000 toward support of the ongoing maintenance and promotion of the recorded audio tour, as well as new initiatives associated with interpretation of the Carnegie Museum of Art's permanent collection

Carnegie Mellon University

Pittsburgh, PA

\$250,000 toward support of the Urban Challenge

CEOs for Cities NFP

Chicago, IL

\$15,000 for Things Look Different Here—Pittsburgh

Chatham Baroque, Inc.

Pittsburgh, PA

\$10,000 for operating support

Chestnut Ridge Community Volunteer Fire Department

Stahlstown, PA

\$165,000 toward purchase of an 1800- to 2000-gallon tanker truck

Children's Hospital of Pittsburgh Foundation

Pittsburgh, PA

\$7,000,000 to create the Richard King Mellon Foundation Institute for Pediatric Research

City of Pittsburgh Department of City Planning

Pittsburgh, PA

\$125,000 toward two-year funding for a Bicycle/Pedestrian Coordinator position with the City of Pittsburgh's Department of City Planning

\$300,000 toward conservation and maintenance of artworks in the City of Pittsburgh's public art collection

Community Loan Fund of Southwestern Pennsylvania, Inc.

Pittsburgh, PA

\$35,000 toward raising nonprofit awareness about real estate strategies and options



World-renowned glass artists, Therman Statom and Dale Chihuly, work with students from The Neighborhood Academy at the Pittsburgh Glass Center, Inc.

Coro Center for Civic Leadership

Pittsburgh, PA

\$200,000 toward expansion of a website service that links students seeking internships with employers seeking interns

Corporation for Owner-Operator Projects

Beaver Falls, PA

\$400,000 toward support of a capital campaign to replace the existing Progress Center with a larger, state-of-the-art Beaver County Manufacturing Technology and Development Center

■ **Duquesne University of the Holy Ghost**
Pittsburgh, PA
\$25,000 to support the 2007–2008 activities of the Pittsburgh Central Keystone Innovation Zone

■ **Economic Growth Connection of Westmoreland**
Greensburg, PA
\$700,000 toward capital support

■ **Event Committee Pittsburgh, Inc.**
Pittsburgh, PA
\$5,500 for strategic planning
\$600,000 for support of operations and Downtown lighting

■ **Fay-Penn Economic Development Council**
Uniontown, PA
\$200,000 toward operating support

■ **First United Methodist Church of Pittsburgh**
Pittsburgh, PA
\$300,000 to support a capital campaign to renovate the First United Methodist Church of Pittsburgh, located in Pittsburgh's East End

■ **Flax Scutching Festival**
Stahlstown, PA
\$10,000 to secure deposit for entertainment for the 100th anniversary festival in Westmoreland County

■ **Frick Art & Historical Center**
Pittsburgh, PA
\$50,000 toward support of *In the Studios of Paris: William Bouguereau and his American Students* to be presented July 5–October 7, 2007

■ **Gateway to the Arts**
Pittsburgh, PA
\$150,000 to support the three-year 50th Anniversary Campaign and Arts for Every Child Campaign

■ **The Georgia Trust for Historic Preservation**
Atlanta, GA
\$425,000 toward renovation costs associated with the Fort Benning Roundhouse

■ **Grantmakers for Effective Organizations**
Washington, DC
\$8,000 toward operating support

■ **The Grantmakers of Western Pennsylvania**
Pittsburgh, PA
\$20,000 toward operating support
\$20,000 for support of the 2007 Nonprofit Summit
\$3,000 toward search for a new Executive Director

■ **Greater Pittsburgh Office of Promotion**
Pittsburgh, PA
\$75,000 toward support of the Los Angeles Project, an initiative to increase film and television production in the southwestern Pennsylvania region

■ **Green Building Alliance**
Pittsburgh, PA
\$500,000 for the Green Building Products Initiative

■ **Idea Foundry**
Pittsburgh, PA
\$650,000 toward support of current programs including a commercialization program

■ **Independent Sector**
Washington, DC
\$17,500 toward operating support



■ **Ireland Institute of Pittsburgh**
Pittsburgh, PA
\$10,000 toward funding for a business delegation trip to Ireland and Northern Ireland in April 2008

■ **Leadership Pittsburgh**
Pittsburgh, PA
\$200,000 toward three-year support for capacity building initiatives that include curriculum and program evaluation enhancements

■ **Ligonier Borough**
Ligonier, PA
\$10,000 toward support of the Shade Tree Project
\$177,000 toward purchase of a street cleaning vehicle

■ **Manchester Craftsmen's Guild**
Pittsburgh, PA
\$25,000 toward support of a regional exhibition for the 2008 National Council on Education for the Ceramic Arts Annual Conference

■ **The Mattress Factory, Ltd.**
Pittsburgh, PA
\$250,000 toward two-year support of facilities improvements and the artistic program

Bluroof Technologies, Inc. is developing a Quality of Life Technology Campus in McKeesport, Pennsylvania. This campus will serve as a demonstration hub to showcase the technical equipment that will be derived from research at Carnegie Mellon University's and University of Pittsburgh's Quality of Life Technology Research Center.

■ **Minority & Women Educational Labor Agency**
Pittsburgh, PA
\$250,000 toward program support for the Building Trades Pre-Apprenticeship Training Program and \$50,000 toward continued consulting and coaching support

■ **The Mountain Playhouse, Inc.**
Jennerstown, PA
\$120,000 toward operating costs to ensure a successful theater season while enhancing the theater experience for all patrons by improving the quality of the performance

■ **New Century Careers, Inc.**
Pittsburgh, PA
\$500,000 toward support of critical new industry-based initiatives and expansion programming

■ **Pennsylvania Resources Council, Inc.**
Pittsburgh, PA
\$115,000 for the start-up phase of Steel City Biofuels to implement a three-year business plan

■ **Pittsburgh Arts & Lectures**
Pittsburgh, PA
\$20,000 to support the 2007 and 2008 seasons of the American Shorts Reading Series

■ **Pittsburgh Ballet Theatre, Inc.**
Pittsburgh, PA
\$300,000 toward operating support to complete the existing season and position the ballet for continued success

■ **Pittsburgh Council for International Visitors**
Pittsburgh, PA
\$100,000 toward operating support

■ **Pittsburgh Dance Alloy**
Pittsburgh, PA
\$35,000 to build organizational capacity

■ **Pittsburgh Downtown Partnership**
Pittsburgh, PA
\$100,000 toward operating support for 2007 and 2008

■ **Pittsburgh Entertainment Project**
Sewickley, PA
\$50,000 to support development of Pittsburgh-themed short films to premier as part of the 250th anniversary celebration

■ **Pittsburgh Filmmakers**
Pittsburgh, PA
\$150,000 toward support of the final phase of the merger between Pittsburgh Filmmakers and Pittsburgh Center for the Arts

■ **The Pittsburgh Foundation**
Pittsburgh, PA
\$2,000,000 to establish the Cultural District Pooled Fund at The Pittsburgh Foundation

■ **Pittsburgh Gateways Corporation**
Pittsburgh, PA
\$600,000 toward support of the Switchgrass Bio-Fuel Initiative to develop, build, and operate a pellet-fuel plant using switchgrass as an alternative fuel source
\$300,000 toward support of America's Music Crossroads Center

■ **Pittsburgh Glass Center, Inc.**
Pittsburgh, PA
\$250,000 for transitional support of the Pittsburgh Glass Center Recovery Plan, dated October 2007 and as presented to the Foundation on November 8, 2007

■ **Pittsburgh Life Sciences Greenhouse**
Pittsburgh, PA
\$6,000,000 toward annual operating support of \$2 million a year for three years

■ **Pittsburgh Opera, Inc.**
Pittsburgh, PA
\$300,000 for operating support to close out the 2006–07 fiscal year and launch the 2007–08 performing season

■ **Pittsburgh Parks Conservancy**
Pittsburgh, PA
\$8,700 toward consulting expenses associated with the refurbishment of Mellon Square Park
\$100,000 toward support to convene a public planning and design process that will address renovation needs and establish a long-term management plan for Mellon Square Park
\$50,000 toward support to host a major urban parks conference bringing together leaders from around the country and internationally

■ **Pittsburgh Partnership for Neighborhood Development**
Pittsburgh, PA
\$500,000 toward operating support and \$250,000 available for projects which leverage regional assets, involve multiple neighborhoods, and support the quality of life and the new economy

■ **The Pittsburgh Public Theater Corporation**
Pittsburgh, PA
\$300,000 for operating support to close out the 2006–07 fiscal year and launch the 2007–08 performance season

■ **Pittsburgh Symphony, Inc.**
Pittsburgh, PA
\$300,000 for general operating support to close out the 2006–07 season and launch the 2007–08 performance season

■ **The Pittsburgh Trust for Cultural Resources**
Pittsburgh, PA
\$3,155,000 toward support of an affordable and workplace housing initiative in the Cultural District
\$500,000 to support the 2008 Pittsburgh International Festival of Firsts to be held in Pittsburgh October 9 through 29, 2008
\$20,000 toward funding for Pittsburgh's First Night 2008
\$50,000 toward consulting services for the RiverPark Development Project

■ **Program to Aid Citizen Enterprise**
Pittsburgh, PA
\$300,000 toward three-year support of operations and implementation of a business plan involving deeper development of Master Consultants and Creation of Giving Circle(s)

■ **Quantum Theatre**
Pittsburgh, PA
\$75,000 toward three-year support of a strategic plan for audience development and capacity building

■ **Renaissance and Baroque Society of Pittsburgh**
Pittsburgh, PA
\$30,000 toward three-year support of the outreach and education program

■ **Riverside Center for Innovation**
Pittsburgh, PA
\$75,000 toward continuation and expansion of a pilot entrepreneurial training program that teaches displaced, low-income, and disadvantaged individuals to start a business

■ **Service Core of Retired Executives (SCORE)**
Latrobe, PA
\$30,000 payable equally over three years to stimulate small business growth in Westmoreland and Indiana Counties

■ **The Society for Contemporary Craft**
Pittsburgh, PA

\$175,000 payable over two years toward support of the Sustainable Systems Project to strengthen performance, increase efficiencies, and achieve long-term stability

■ **The Sprout Fund**
Pittsburgh, PA

\$450,000 toward general operating support
\$500,000 toward support of Pittsburgh 250 Community Connections program

■ **Squonk Opera, Inc.**
Pittsairn, PA

\$25,000 toward development of a new outdoor show, AstroRama, designed to both build regional audiences and complement major promotional efforts for Pittsburgh's 250th anniversary

■ **Steel City Rowing Corporation**
Verona, PA

\$300,000 toward construction of a boathouse, park, and docks in the riverfront section of Verona

■ **Sustainable Pittsburgh**
Pittsburgh, PA

\$20,000 toward development and launch of a communications campaign to increase participation in outdoor recreation opportunities
\$400,000 toward support of the 2008 outdoor recreation programs
\$400,000 toward the Sustainable Community and Business Capacity Building programs

■ **Team Pennsylvania Foundation**
Harrisburg, PA

\$7,500 toward support of the Keystone Innovation Zone Conference
\$10,000 toward support of the Pennsylvania Young Professionals Conference

■ **Three Rivers Arts Festival of Carnegie Institute**
Pittsburgh, PA

\$100,000 for the 2007 Branding and Marketing Campaign

■ **Three Rivers Workforce Investment Board**
Pittsburgh, PA

\$35,000 for the Labor Market Indicators Project

■ **United Fire Companies of Ligonier**
Ligonier, PA

\$75,000 toward unrestricted capital expenditures

■ **University of Pittsburgh**
Pittsburgh, PA

\$50,000 toward support of the Citizens Advisory Committee on the Efficiency and Effectiveness of City-County Government

■ **University of Pittsburgh, University Center for Social and Urban Research**
Pittsburgh, PA

\$100,000 toward support of the Southwestern Pennsylvania Regional Indicators Consortium, a project which compiles data on a variety of economic, demographic, environmental, and social topics for the Pittsburgh region

■ **University of Pittsburgh School of Medicine**
Pittsburgh, PA

\$13,000,000 to create the Richard King Mellon Foundation Institute for Pediatric Research

■ **Urban Mountain Gathering Place, Inc.**
Pittsburgh, PA

\$50,000 toward operating support for 2007 and 2008

■ **Venture Outdoors**
Pittsburgh, PA

\$175,000 toward enhancements to the Great Outdoors Guide (GO Guide)
\$150,000 toward project and operating support

■ **War for Empire, Inc.**
Pittsburgh, PA

\$300,000 toward the Forbes Trail travel guide and other programs relating to the promotion of the trail

■ **Westmoreland County Airport Authority**
Latrobe, PA

\$50,000 toward unrestricted support

■ **Westmoreland County Federated Library System**
Murrysville, PA

\$400,000 toward development and implementation of a countywide, full-featured integrated library information network

■ **Westmoreland Museum of American Art**
Greensburg, PA

\$175,000 toward publication of two catalogues and support for two exhibitions: *Painting in the United States* and *Masterpieces of American Art*

Regional Economic Development Total **\$49,375,200**

Education

■ **A+ Schools: Pittsburgh's Community Alliance for Public Education**
Pittsburgh, PA

\$150,000 toward support of the Community Mobilization for Improvement in Public Education in Pittsburgh initiative

■ **Arsenal Family and Children's Center**
Pittsburgh, PA

\$54,000 toward support of a Developmental Preschool Program and installation of an intercom security system at the Friendship site

■ **Carnegie Mellon University**
Pittsburgh, PA

\$25,000,000 toward creation of the Life Sciences Competitiveness Fund to be used to assist the university in upgrading facilities and recruiting faculty and students in the life sciences area
\$9,500 toward support of a graduate consortium for the Department of Engineering and Public Policy

■ **Chatham University**
Pittsburgh, PA

\$50,000 toward an environmental initiative planning grant

■ **Child Development Centers**
Franklin, PA

\$200,000 for renovations of the Franklin Child Development Center

■ **Christ the Divine Teacher School**
Latrobe, PA

\$200,000 toward support of the capital project to replace a boiler, windows, and roof

■ **Community College of Allegheny County Educational Foundation**
Pittsburgh, PA

\$30,000 toward support for the search of a new president

■ **Derry Area School District Foundation**
Derry, PA

\$25,000 toward construction of an outdoor amphitheater and art center on the school's campus

■ **Diocese of Greensburg**
Greensburg, PA

\$250,000 toward launching of an initiative to create instructional technology centers in all of the schools in the Diocese of Greensburg to benefit students, teachers, and members of the communities in which the schools are located

■ **Duquesne University of the Holy Ghost**
Pittsburgh, PA

\$275,000 payable over two years for support of the New Trustees for a New Pittsburgh program through the Nonprofit Leadership Institute

■ **The Extra Mile Education Foundation, Inc.**
Pittsburgh, PA

\$100,000 over two years as a match to new corporate and individual donations on a \$2 to \$1 basis

■ **Fight Crime: Invest in Kids Pennsylvania**
Harrisburg, PA

\$50,000 payable equally over two years to promote expanded state investment in prekindergarten and other early childhood programs

■ **Junior Achievement of Southwest Pennsylvania, Inc.**
Warrendale, PA

\$250,000 toward support of after-school programs in collaboration with local organizations such as Hill House Association and Family Resources

■ **McGuire Memorial Home Foundation**
New Brighton, PA

\$110,000 to expand the capacity of the school at McGuire Memorial to serve a greater number of children with multiple disabilities and children with autism, as well as those who are medically fragile

■ **The Neighborhood Academy**
Pittsburgh, PA

\$250,000 toward two-year support of operations

■ **Oglebay Foundation, Inc.**
Wheeling, WV

\$150,000 toward three-year support of the National Parks and Recreation Training School

■ **Phase 4 Learning Center, Inc.**
West Mifflin, PA

\$250,000 for planning to build the infrastructure of the organization

■ **Propel Schools Foundation**
Pittsburgh, PA

\$400,000 payable over two years for support of growth in 2007 and 2008

■ **Saint Vincent College**
Latrobe, PA

\$60,000 for the renovation of the tennis courts

■ **Sewickley Academy**
Sewickley, PA

\$750,000 toward support of the Picture This Campaign

■ **University of Pittsburgh**
Pittsburgh, PA

\$50,000 toward operating expenses for the Johnson Institute

■ **University of Pittsburgh School of Medicine**
Pittsburgh, PA

\$10,000 toward support of the 2007 Mellon Lecture

■ **Valley School of Ligonier**
Ligonier, PA

\$10,000 toward expenses associated with the Pittsburgh Area Independent School Teachers Association 2007 fall conference

■ **Washington and Jefferson College**
Washington, PA

\$1,000,000 toward construction of a new state-of-the-art physical sciences building using green principles and renovation of an existing life sciences building



Fifth-grade students of Mr. Gil Smith at Sewickley Academy

■ **Westmoreland County Community College Educational Foundation, Inc.**
Youngwood, PA

\$26,000 for strategic planning
\$210,000 for enhancement of the nursing and dental programs

■ **Woods Hole Oceanographic Institution**
Woods Hole, MA

\$150,000 toward support of Live from the Poles, a multimedia presentation in partnership with the Carnegie Museum of Natural History

■ **Workforce Development Global Alliance**
Pittsburgh, PA

\$10,000 for the Pittsburgh Exchange Students for Kids in Kenya and e-Mentoring Technology program
\$4,000 to hire a consultant

Education Total **\$30,083,500**

Human Services and Nonprofit Capacity Building

Allegheny County Department of Human Services

Pittsburgh, PA
\$250,000 toward development of a strategic action plan to address future organizational technology needs

American Heart Association

Pittsburgh, PA
\$15,000 to further cardiovascular research conducted in Pittsburgh

Angels' Place, Inc.

Pittsburgh, PA
\$244,000 for succession planning and raising public awareness

Bethlehem Haven of Pittsburgh

Pittsburgh, PA
\$13,750 to support a business analysis for the Human Resource Collaborative
\$150,000 toward support of the merger between Bethlehem Haven and Miryam's

Bridge to Independence, Inc.

Braddock, PA
\$225,000 toward expansion of childcare services, literacy, job preparation, and other services in Braddock

Community Human Services Corporation

Pittsburgh, PA
\$200,000 payable over three years toward establishment of a development team to coordinate an agency-wide initiative around fund-raising

CONTACT Pittsburgh, Inc.

Pittsburgh, PA
\$50,000 for capacity building for system improvements

Eisenhower Medical Center

Rancho Mirage, CA
\$250,000 toward Phase II of Campaign Eisenhower

Elizabeth Seton Center, Inc.

Pittsburgh, PA
\$30,000 to retain two architectural firms to create a master plan for the construction of a performing arts facility complex

Family Hospice and Palliative Care

Pittsburgh, PA
\$250,000 as a challenge grant toward support of a campaign for renovations to The Center for Compassionate Care

Family House, Inc.

Pittsburgh, PA
\$750,000 toward establishment of a new Family House facility to meet growing demand

FamilyLinks, Inc.

Pittsburgh, PA
\$300,000 toward the purchase and implementation of a new clinical management system

Focus on Renewal Sto-Rox Neighborhood Corporation

McKees Rocks, PA
\$1,500,000 for support of a new cultural arts center

Garfield Jubilee Association, Inc.

Pittsburgh, PA
\$50,000 for financial management infrastructure

Grantmakers for Effective Organizations

Washington, DC
\$50,000 toward collaboration to bring funders and nonprofit groups together

Goodwill Industries of Pittsburgh

Pittsburgh, PA
\$200,000 for two-year support of annual operating costs following the merger with Northside Common Ministries

Greene County Habitat For Humanity

Waynesburg, PA
\$350,000 to construct a warehouse to house the Package Home Warehouse Project

Hosanna House, Inc.

Wilkinsburg, PA
\$300,000 toward transitional working capital and consulting support

Hosanna Industries, Inc.

Rochester, PA
\$50,000 toward rehabilitation of six homes in New Orleans damaged by Hurricane Katrina

Human Services Center Corporation

Turtle Creek, PA
\$250,000 for building and program expansion

Neighborhood Housing Services, Inc.

Pittsburgh, PA
\$100,000 toward renovation, build-out, and furnishing of a NeighborWorks Home Ownership Center in Downtown Pittsburgh

North Hills Community Outreach, Inc.

Allison Park, PA
\$50,000 toward expansion and renovation of the existing Millvale Community Center and to provide increased space for North Hills Community Outreach and other human service providers

North Side Christian Health Center

Pittsburgh, PA
\$250,000 toward support of relocation and expansion plans to double service capacity
\$200,000 toward operating support

Pennsylvania Organization For Women in Early Recovery

Pittsburgh, PA
\$50,000 toward transitional operating support during 2007

Pittsburgh AIDS Task Force, Inc.

Pittsburgh, PA
\$50,000 toward renovations and \$35,000 for long-term sustainability

Pittsburgh Pastoral Institute

Pittsburgh, PA
\$125,000 toward costs associated with moving the Good Grief Center to a central, accessible location
\$200,000 toward support of the purchase of property

Protestant Episcopal Diocese of Pittsburgh

Pittsburgh, PA
\$300,000 toward support of the 250th Anniversary of Anglican Witness in Western Pennsylvania, a celebration coinciding with the Pittsburgh region's 250th anniversary

Province of St. Augustine of the Capuchin Order

Pittsburgh, PA
\$25,000 for building renovation of the Capuchin Ministry Center

Samaritan Counseling Center of Western Pennsylvania

Sewickley, PA
\$75,000 toward two-year support to establish a development infrastructure that will help the organization become self-sustaining

Strength Incorporated

Pittsburgh, PA
\$5,000 toward a financial assessment to be performed by the Bayer Center for Nonprofit Management

Union Aid Society

Sewickley, PA
\$25,000 toward organizational capacity using technology to expand services, build the donor base, and strengthen financial sustainability

The United Way of Allegheny County

Pittsburgh, PA
\$500,000 toward support of the annual campaign and redesign of the Impact Fund
\$400,000 to support the Impact Fund, \$150,000 to support the Preventing Youth Violence initiative, and \$50,000 for staffing to implement new research-based models

United Way of Westmoreland County

Greensburg, PA
\$55,000 for the Back-Office Support Research Project

Victim Outreach Intervention Center

Butler, PA
\$50,000 toward support of a rural outreach program

Young Women's Christian Association of Westmoreland County

Greensburg, PA
\$30,000 toward support of completing an in-depth strategic plan, conversion of the existing database, and preparation for the 50th anniversary fund campaign

Human Services and Nonprofit Capacity Building Total

\$8,202,750

Children, Youth, and Young Adults

Achieva

Pittsburgh, PA
\$500,000 payable over three years for expansion of the Young Adult Transition Program

Allegheny County Court Appointed Special Advocate Program

Pittsburgh, PA
\$75,000 for two-year support of costs associated with hiring a new full-time case manager who will directly supervise volunteers advocating for abused and neglected children

Auberle

McKeesport, PA
\$250,000 toward two-year support of a pilot program to prevent juvenile delinquency
\$500,000 toward construction of a facility to expand the Group Oriented Adolescent Living Program

Big Brothers Big Sisters of Greater Pittsburgh

Pittsburgh, PA
\$150,000 toward transitional funding

Child Watch of Pittsburgh

Pittsburgh, PA
\$50,000 payable equally over two years for operating support

Earthen Vessels Outreach

Pittsburgh, PA
\$25,000 for support of youth programs

East End Cooperative Ministry, Inc.

Pittsburgh, PA
\$150,000 toward support of second year funding for the PHYSED program, an intervention program for extremely high-risk middle- and high-school students in Pittsburgh's East End

Family Pathways

Butler, PA
\$250,000 to help complete renovations and development of the Monarch Training Institute

Family Resources

Pittsburgh, PA
\$300,000 toward two-year support of an environmental education and outdoor activities program, as well as trail restoration and enhancement at the Family Retreat Center in Mars, Pennsylvania

Felician Sisters of Our Lady of the Sacred Heart Province

Coraopolis, PA
\$15,000 toward support of the Mooncrest Children's Program and \$10,000 to support the music program

Girl Scouts of Talus Rock Council, Inc.

Johnstown, PA
\$300,000 toward support to merge five Girl Scout Councils

Hill House Association

Pittsburgh, PA
\$1,750,000 toward the capital campaign to improve facilities and help support existing programs; \$750,000 to be paid as a \$1 to \$1 challenge on individual donations received



Children from Manchester Youth Development Center, Inc. participate in an after-school outing to PPG's ice-skating rink.

- **Holy Family Institute**
Pittsburgh, PA
\$250,000 to assist with training Holy Family Institute personnel in the use of the Psycho-Educational Treatment Model
- **Jewish Healthcare Foundation of Pittsburgh**
Pittsburgh, PA
\$150,000 to support development of an interactive program to promote healthy lifestyles in children
- **KidsVoice**
Pittsburgh, PA
\$800,000 toward operating support and costs associated with replication of the multidisciplinary integrated client information system
- **Ligonier Camp and Conference Center**
Ligonier, PA
\$1,500,000 for construction of a new kitchen and dining hall
- **Ligonier Valley Learning Center, Inc.**
Ligonier, PA
\$25,000 toward facility improvements to meet the needs of children with physical limitations who participate in the Mental Health Wellness programs
- **Ligonier Valley Midget and Teener Baseball League**
Ligonier, PA
\$150,000 toward support of the capital campaign to improve playing fields and address safety issues
- **Manchester Youth Development Center, Inc.**
Pittsburgh, PA
\$100,000 toward operating and project support
- **Neighborhood Youth Outreach Program**
Wilkinsburg, PA
\$10,000 to support a program for at-risk children and youth in Wilkinsburg, East Liberty, Homestead, Garfield, and Swissvale
- **One Vision One Life, Inc.**
Pittsburgh, PA
\$300,000 toward support of Allegheny County's violence prevention initiative, focusing on the North Side, the Hill District, South Pittsburgh, and McKeesport
- **Pennsylvania Institute for Conservation Education**
Bloomsburg, PA
\$86,000 toward operating support for PA Wildlife Leadership Adventures
- **Pennsylvanians for Responsible Use of Animals**
Harrisburg, PA
\$10,000 toward support of the Hunters Sharing the Harvest Program
- **The Pittsburgh Project**
Pittsburgh, PA
\$500,000 toward support of strategic plan implementation
- **Pittsburgh Urban Leadership Service Experience**
Pittsburgh, PA
\$20,000 for transitional working capital
- **Pittsburgh Youth Golf Foundation**
Pittsburgh, PA
\$50,000 toward development and expansion of youth golf programming
- **Sarah Heinz House**
Pittsburgh, PA
\$250,000 for support for the Building Character Campaign to address needed renovations and construction of new space
- **UCP Foundation, Inc.**
Washington, PA
\$250,000 toward construction and development of Your Child's Place, a prescribed pediatric extended-care center for children with complex medical needs that prevent them from attending typical child-care centers; and Rainbow's End Recreation Station, a creative play center for children of all abilities and the new home of the early intervention program
- **University of Pittsburgh Office of Child Development**
Pittsburgh, PA
\$150,000 toward one year of operational support and strategic planning
- **Urban Impact Foundation**
Pittsburgh, PA
\$100,000 toward support for the summer day camp and academic program
\$10,000 to hire an evaluator for the academic program
- **Urban Youth Action, Inc.**
Pittsburgh, PA
\$100,000 to provide under-represented students an educational and career exploration intervention in five target areas: science, technology, engineering, mathematics, and language arts
- **Westmoreland Human Services, Inc.**
Greensburg, PA
\$150,000 toward support of building renovations for use by human service organizations
- **Young Men's Christian Association of Armstrong County**
Kittanning, PA
\$40,000 toward support of a two-year project to upgrade software and hardware computer technology and related training and maintenance
- **Young Men's Christian Association of the Sewickley Valley**
Sewickley, PA
\$75,000 toward program support of the Youth and Teen Outreach Initiative
- **YouthPlaces**
Pittsburgh, PA
\$250,000 toward support of after-school programs for teens, and \$15,000 toward support of staff development training, in conjunction with a new strategic plan
\$100,000 for the 2007 Summer Violence Prevention Program
- **YouthWorks**
Pittsburgh, PA
\$250,000 toward support of the 2007–2008 fiscal year youth employment programs

Children, Youth, and Young Adults
Total **\$10,016,000**

Conservation

- **County of Allegheny**
Pittsburgh, PA
\$15,000 toward an assessment, performed by the American Institute for Leisure Resources, to determine whether there is potential for increased revenue to sustain the Allegheny County parks
- **Allegheny Land Trust**
Sewickley, PA
\$150,000 payable over two years for implementation of a strategic plan
- **American Rivers**
Washington, DC
\$600,000 payable equally over three years toward operational support for dam removal and river restoration in western Pennsylvania
- **Archaeological Conservancy**
Albuquerque, NM
\$17,500 to preserve the Kirshner site and provide maintenance to five Monongahela culture sites in Pennsylvania
- **Conemaugh Valley Conservancy**
Hallsopple, PA
\$225,000 toward operating assistance
- **The Conservation Fund**
Arlington, VA
\$2,300,000 toward the purchase of property in Adams County, Pennsylvania
\$900,000 toward three-year support to conserve Pennsylvania's and the nation's great legacy of land and water resources
\$440,000 toward the purchase of property in Clearfield County, Pennsylvania
\$5,000,000 to help implement a strategy to protect and preserve the Rocky Mountain Front ecosystem
\$250,000 toward support of the 2008 American Outdoors Review
- 

Rose-breasted Grosbeak, a migrant bird that breeds in open deciduous woods of the eastern United States and Canada
- **County of Allegheny**
Pittsburgh, PA
\$15,000 toward an assessment, performed by the American Institute for Leisure Resources, to determine whether there is potential for increased revenue to sustain the Allegheny County parks
- **Foundation for California University of Pennsylvania**
California, PA
\$50,000 to support the Wild Pheasant Trap and Transfer project for central Pennsylvania
- **Foundation for Pennsylvania Watersheds**
Johnstown, PA
\$500,000 toward support of the small grants program to leverage agency funding for site-specific restoration
- **Loyalhanna Watershed Association, Inc.**
Ligonier, PA
\$80,000 payable equally over two years toward operating support for 2008 and 2009
- **Mountain Watershed Association, Inc.**
Melcroft, PA
\$150,000 toward support of efforts to implement restoration of acid mine drainage sites in the Indian Creek Watershed
- **National Audubon Society**
New York, NY
\$600,000 for three-year support of conservation internship work at and adjacent to important bird areas in western Pennsylvania
- **National Wild Turkey Federation, Inc.**
Edgefield, SC
\$3,000 toward purchase of a wet lime spreader
- **Nine Mile Run Watershed Association, Inc.**
Pittsburgh, PA
\$300,000 toward support of Phase II of the Rain Barrel Initiative to help educate the public about reducing stormwater runoff, install 3500 rain barrels, and monitor and measure the impacts of runoff at four demonstration sites
- **PA Cleanways**
Greensburg, PA
\$300,000 payable over two years for the Statewide Illegal Dump Survey and Cleanup Campaign
- **Pennsylvania Environmental Council, Inc.**
Pittsburgh, PA
\$600,000 for two-year support of a comprehensive water quality and landscape protection program for western Pennsylvania
- **Regional Trail Corporation**
West Newton, PA
\$1,500,000 toward construction of the final segment of the Great Allegheny Passage, a trail connecting Pittsburgh and the District of Columbia
- **Riverlife Task Force**
Pittsburgh, PA
\$750,000 for design drawings and construction documents needed to accelerate the renovations for Point State Park
- **Ruffed Grouse Society of America**
Coraopolis, PA
\$166,000 for purchase and operation of three forestry enhancement machines
- **Student Conservation Association, Inc.**
Charlestown, NH
\$300,000 toward support of the Three Rivers Region projects and the launch of a pilot project, The Green Cities Intern Corps
- **University of Pittsburgh at Greensburg**
Greensburg, PA
\$200,000 toward two-year support of the Smart Growth Partnership of Westmoreland County
- **West Virginia University Foundation**
Morgantown, WV
\$60,000 toward the efforts of Dr. John Edward to preserve hunting heritage and promote recreational hunting
- **Western Pennsylvania Conservancy**
Pittsburgh, PA
\$6,204,000 toward the purchase of property in Clearfield and Elk Counties
\$707,620 toward the purchase of property in Fayette County
\$7,961,000 toward the purchase of property in Clarion, Jefferson, Forest, and Somerset Counties
- **Zoological Society of Pittsburgh**
Pittsburgh, PA
\$500,000 toward construction of elephant breeding facilities at the zoo's new International Conservation Center in Somerset County

Conservation
Total **\$30,829,120**

Statements of Financial Position

	December 31	
	2007	2006
ASSETS		
Cash	\$ 1,560	\$ 52,589
Other current assets	14,940,365	415,437
Investments:		
Stocks	1,245,071,500	1,154,419,152
Long-term debt instruments	462,972,018	454,367,292
Temporary investments	152,005,908	164,327,598
Alternative investments	343,667,543	312,037,977
Total	2,203,716,969	2,085,152,019
Program-related assets	3,000,000	3,000,000
Other assets	0	83,655
Total assets	\$2,221,658,894	\$2,088,703,700
LIABILITIES AND NET ASSETS		
Liabilities:		
Grants approved but not paid	\$ 34,424,065	\$ 17,089,845
Accounts payable and accrued liabilities	892,242	9,584,252
Deferred federal excise taxes	3,661,139	4,740,587
Appropriations for program-related assets	3,000,000	3,000,000
Total	41,977,446	34,414,684
Unrestricted net assets	2,179,681,448	2,054,289,016
Total liabilities and net assets	\$2,221,658,894	\$2,088,703,700

The accompanying notes are an integral part of these financial statements.

Statements of Activities and Changes in Net Assets

For the year ended December 31,	2007	2006
Investment income	\$ 107,016,666	\$ 106,734,142
Expenses		
Administrative and investment expenses	10,647,368	10,353,204
Provision for federal excise taxes	3,215,120	4,175,455
Provision for deferred federal excise taxes	(1,079,448)	533,972
	12,783,040	15,062,631
Net investment income	94,233,626	91,671,511
Grants and appropriations approved	126,549,892	84,874,148
(Deficiency) excess of net investment income over approvals	(32,316,266)	6,797,363
Net realized gains from investments	265,653,480	145,689,514
Unrealized (depreciation) appreciation on investments	(107,944,782)	53,397,204
	157,708,698	199,086,718
Increase in unrestricted net assets	125,392,432	205,884,081
Unrestricted net assets:		
Beginning of year	2,054,289,016	1,848,404,935
End of year	\$2,179,681,448	\$2,054,289,016

The accompanying notes are an integral part of these financial statements.

Statements of Cash Flows

For the year ended December 31,	2007	2006
Cash flows from operating activities:		
Increase in net assets	\$ 125,392,432	\$ 205,884,081
Adjustments to reconcile increase in net assets to net cash (used in) provided by operating activities:		
Depreciation	61,324	94,537
Accretion	(1,036,481)	(930,801)
Deferred federal excise taxes	(1,079,448)	533,972
Realized gains on investments	(265,653,480)	(145,689,514)
Unrealized depreciation (appreciation) on investments	107,944,782	(53,397,204)
Increase (decrease) in cash from changes in:		
Other current assets	(14,524,928)	(135,231)
Grants approved but not paid	17,334,220	(8,612,500)
Accounts payable and accrued liabilities	(8,692,010)	8,869,986
Net cash (used in) provided by operating activities	(40,253,589)	6,617,326
Cash flows from investing activities:		
Purchases of investments	(7,904,514,245)	(6,174,805,549)
Proceeds from sales of investments	7,944,716,805	6,167,987,729
Net cash provided by (used in) investing activities	40,202,560	(6,817,820)
Net decrease in cash	(51,029)	(200,494)
Cash, beginning of year	52,589	253,083
Cash, end of year	\$ 1,560	\$ 52,589

The accompanying notes are an integral part of these financial statements.

Summary of Investments

	December 31, 2007		December 31, 2006	
	Book Value	Market Quotations	Book Value	Market Quotations
STOCKS				
Domestic equities	\$ 667,693,549	\$ 782,367,976	\$ 534,106,239	\$ 743,866,715
Foreign equities	347,556,652	462,703,524	267,252,801	410,552,437
TOTAL STOCKS	1,015,250,201	1,245,071,500	801,359,040	1,154,419,152
LONG-TERM DEBT INSTRUMENTS	460,570,455	462,972,018	451,625,008	454,367,292
TEMPORARY INVESTMENTS				
Demand and interest-bearing notes	138,402,699	138,404,227	161,635,253	161,640,053
Foreign short-term investments	13,578,275	13,601,681	2,688,435	2,687,545
TOTAL TEMPORARY INVESTMENTS	151,980,974	152,005,908	164,323,688	164,327,598
ALTERNATIVE INVESTMENTS	209,801,435	343,667,543	193,785,597	312,037,977
TOTAL INVESTMENTS	\$1,837,603,065	\$2,203,716,969	\$1,611,093,333	\$2,085,152,019

The accompanying notes are an integral part of these financial statements.

Notes to Financial Statements

Note 1-Significant Accounting Policies

Basis of Accounting

The accompanying financial statements of the Richard King Mellon Foundation (Foundation) are prepared on the accrual basis of accounting.

Nature of Operations

The purpose of the Foundation is to provide grants to organizations in Pittsburgh and southwestern Pennsylvania, primarily in the areas of Regional Economic Development, Education, Children, Youth, and Young Adults, and Human Services and Nonprofit Capacity Building. Its interest in the area of Conservation is national.

Cash

Cash includes operating accounts plus domestic income cash held in bank custody accounts.

Investments

For financial reporting purposes, investments are stated primarily at market quotations, which may not necessarily represent realizable values. Market quotations of foreign investments include the effect of the conversion into U.S. dollars at the foreign currency exchange rate in effect at year-end. Investments for which market quotations are not available are stated at estimated values as determined by investment managers. The book value of direct investments shown on the summary of investments is cost, except for donated assets which are valued at the market quotations at the date of receipt by the Foundation. Investments in alternative investments are valued at fair market value as determined in good faith by the general partner.

The Foundation's investments are exposed to various risks, such as interest rate, market and credit. Due to the level of risk associated with investments and the level of uncertainty related to changes in the value of investments, it is at least reasonably possible that significant changes in risks in the near term may materially affect the amounts reported in the financial statements.

Realized gain (loss) from dispositions of investments is determined by specific cost identification. Unrealized appreciation (depreciation) of investments represents the change in the difference between market quotations and the total book value of investments held at the beginning and end of the year.

Use of Estimates

The preparation of financial statements in conformity with generally accepted accounting principles requires management to make estimates and assumptions that affect the reported amounts of assets and liabilities and the disclosure of contingent assets and liabilities at the date of the financial statements. Estimates also affect the reported amounts of revenues and expenses during the reporting period. Actual results could differ from those estimates.

Note 2-Federal Excise Taxes

The Foundation is exempt from federal income taxes under Section 501(c) (3) of the Internal Revenue Code. The Foundation is subject to a federal excise tax equal to two percent of net investment income, which consists of interest and dividend income, realized gains on sales of investments less realized losses to the extent that they can be offset against realized gains, less related investment expenses. The Foundation met certain distribution requirements defined in Section 4940 of the Internal Revenue Code, resulting in a reduced tax of one percent of net investment income for the years ended December 31, 2007 and 2006.

At December 31, 2007 and 2006, respectively, deferred federal excise taxes are provided at one percent, which is the rate expected to be paid on unrealized gains on investments.

Note 3-Recent Accounting Pronouncements

In September 2006, the FASB issued SFAS No. 157, "Fair Value Measurements" (SFAS 157). SFAS 157 defines fair value, establishes a framework for measuring fair value in generally accepted accounting principles, and expands disclosures about fair value measurements. The provisions of this standard apply to other accounting pronouncements that require or permit fair value measurements. SFAS 157 becomes effective for the Foundation on January 1, 2008. Upon adoption, the provisions of SFAS 157 are to be applied prospectively with limited exceptions. The Foundation is currently evaluating the impact of adopting this statement.

In February 2007, the FASB issued SFAS No. 159, "The Fair Value Option for Financial Assets and Financial Liabilities— Including an Amendment of FASB Statement No. 115." SFAS No. 159 permits entities to choose to measure eligible items at fair value at specified election dates and report unrealized gains and losses on items for which the fair value option has been elected in earnings at each subsequent reporting date. SFAS No. 159 is effective for fiscal years beginning after November 15, 2007. The Foundation is currently evaluating the impact of adopting this statement.

Note 4-Commitments

The Foundation is a Limited Partner in limited partnerships for investment purposes. At December 31, 2007 and 2006, the Foundation had contractually committed to additional investments of \$203.7 million and \$173.9 million, respectively.

At December 31, 2007 and 2006, the Foundation subscribed to purchase fixed income obligations with an issuance date of January 2008 and 2007, respectively. The obligations totaled \$59.8 million and \$31.6 million at December 31, 2007 and 2006, respectively.

At December 31, 2007 and 2006, the Foundation subscribed to sell fixed income obligations with an issuance date of January 2008 and 2007, respectively. The obligations totaled \$62.0 million and \$23.3 million at December 31, 2007 and 2006, respectively.

Report of Independent Auditors

To the Trustees of
Richard King Mellon Foundation:

In our opinion, the accompanying statements of financial position and the related statements of activities and changes in net assets and of cash flows present fairly, in all material respects, the financial position of Richard King Mellon Foundation at December 31, 2007 and 2006, and the changes in its net assets and its cash flows for the years then ended in conformity with accounting principles generally accepted in the United States of America. These financial statements are the responsibility of the Richard King Mellon Foundation's management; our responsibility is to express an opinion on these financial statements based on our audits. We conducted our audits of these financial statements in accordance with auditing standards generally accepted in the United States of America, which require that we plan and perform the audit to obtain reasonable assurance about whether the financial statements are free of material misstatement. An audit includes examining, on a test basis, evidence supporting the amounts and disclosures in the financial statements, assessing the accounting principles used and significant estimates made by management, and evaluating the overall financial statement presentation. We believe that our audits provide a reasonable basis for our opinion.

Our audits were conducted for the purpose of forming an opinion on the basic financial statements taken as a whole. The summary of investments as of December 31, 2007 and 2006 is presented for the purpose of additional analysis and is not a required part of the basic financial statements. Such information has been subjected to the auditing procedures applied in the audits of the basic financial statements and, in our opinion, is fairly stated in all material respects in relation to the basic financial statements taken as a whole.



May 12, 2008

Richard King Mellon Foundation

Policy and Grant Guidelines

Effective January 1, 2005, the Trustees established the following program priorities:

Western Pennsylvania

Conservation

- Land Preservation
- Watershed Protection and Restoration
- Sustainable Environments

Southwestern Pennsylvania

Regional Economic Development

- Quality of Urban Life
- Talent Attraction and Retention
- Business Stimulus Initiatives
- Rural Economic Development
- Arts and Culture, emphasizing economic impact

Children, Youth, and Young Adults

- Early Childhood Education
- After-school Programs

Education

- Independent and Parochial Schools
- Higher Education Institutions
- Workforce Training

Human Services and Nonprofit Capacity Building

- Critical and Strategic Service Providers

The Foundation gives priority to projects and programs that have clearly defined outcomes and an evaluation component. The Foundation accepts applications throughout the year. The Foundation uses the Common Grant Application Format, developed by Grantmakers of Western Pennsylvania which may be obtained on line at <http://foundationcenter.org/grantmaker/rkmellon/> or by contacting the Foundation offices:

Attention:

Grants and Information Manager
Richard King Mellon Foundation
One Mellon Center
500 Grant Street, Suite 4106
Pittsburgh, PA 15219-2502
412 392 2800 telephone
412 392 2837 fax

The Foundation does not consider requests on behalf of individuals or from outside the United States. The Foundation does not encourage requests from outside Pennsylvania.

Trustees

Richard P. Mellon
Seward Prosser Mellon
Alison M. Byers, Psy.D.
W. Russell G. Byers, Jr.
Catharine Mellon Cathey
Bruce K. M. Henderson
Constance Elizabeth Mellon Kapp
Armour N. Mellon
Richard A. Mellon
Robert B. Burr, Jr.
Lawrence S. Busch
Michael Watson

Officers

Richard P. Mellon
Chairman
Seward Prosser Mellon
President and Chief Executive Officer
Scott D. Izzo
Director
Michael Watson
Senior Vice President
Douglas L. Sisson
Vice President
Robert B. Burr, Jr.
Treasurer
Lawrence S. Busch
Assistant Treasurer
Ann Marie Helms*
Lisa Kuzma
Secretary
John J. Turcik
Controller

**Until August 31, 2007*

Staff

Scott D. Izzo
Director
Michael Watson
Program Officer
Ann Marie Helms
Program Officer (Until August 31, 2007)*
Brian Hill
Program Officer (As of May 5, 2008)
Lisa Kuzma
Program Officer
Lisa Reed
Information and Grants Manager
Bernadette Braszo
Executive Assistant
Roseann Farkasovsky
Administrative Assistant
Brook Noel
Executive Assistant
Candace Jiles
Clerical Secretary/Receptionist
Andrew Zezza
Receptionist/Messenger

**The Foundation is grateful for the dedicated and distinguished contributions of Ann Marie Helms who has retired after 15 years of service.*

The Foundation is thankful for the vision and creativity that Robert Bowden has provided in designing its annual report for the past 35 years.

Project Manager and Editing: Ellen Brooks; **Editing:** Mary Brignano;
Layout and Print Production: George Popichak; **Printing:** Broudy Printing Inc.;
Photography: courtesy of the Audubon Society of Western Pennsylvania, pages 18, 31; courtesy of Bluerof Technologies, Inc., page 24; Chris Brown, courtesy of Manchester Youth Development Center, Inc., pages 17, 29; courtesy of The Conservation Fund, pages 20/21; Alexander Denmark, cover and pages 10/11; courtesy of Focus on Renewal Sto-Rox Neighborhood Corporation, page 15; Joshua Franzos, courtesy of Carnegie Museum of Natural History, pages 2/3; Harry Giglio, courtesy of Sewickley Academy, pages 1, 12/13;



Printed in USA on recycled paper

Jim Judkis, pages 2, 6/7, 8/9, 14/15, 16/17; Matt Klevemann, page 7; Kathleen Mulcahy, courtesy of the Pittsburgh Glass Center, Inc., page 23; courtesy of The Neighborhood Academy, page 13; Chris Oberdorf, courtesy of Event Committee Pittsburgh, Inc., page 11; Larry Rippel, courtesy of Allegheny County Cooperative Extension, page 22; courtesy of Sewickley Academy, page 27; Michael Tarquinio, courtesy of Children's Hospital of Pittsburgh of UPMC, page 6; courtesy of Western Pennsylvania Conservancy, pages 4/5, 18/19; courtesy of Paul Wiegman, page 1